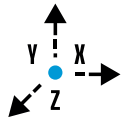


ARIES

Powerful and versatile for all types of welding

The Aries laser welding machine is designed to guarantee **high welding quality even on large workpieces**, thanks to **its open welding chamber and 3-axis height-adjustable table**.



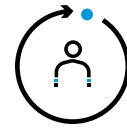
MOVEMENT ON 3 AXES

Large table movement on X,Y,Z axes with a load capacity of up to 80 kg.



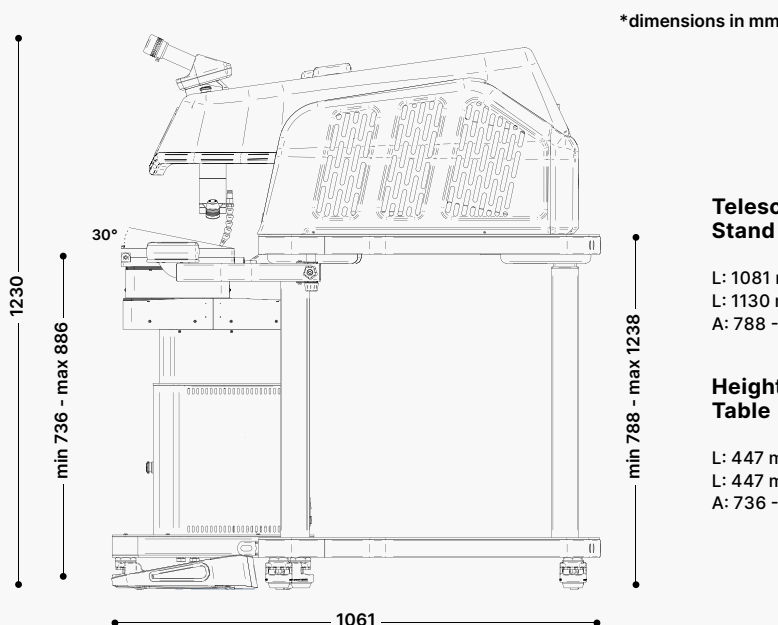
MAXIMUM PRODUCTIVITY

+15 hours of continuous operation thanks to the high peak power, the enhanced cooling system, and a frequency of up to 40 Hz.



FLEXIBILITY AND ERGONOMICS

Thanks to the telescopic stand and the solid height-adjustable support, operator can work both **sitting and standing**.



Telescopic Stand

L: 1081 mm
L: 1130 mm
A: 788 - 1238 mm

Height-adjustable Table

L: 447 mm
L: 447 mm
A: 736 - 886 mm

Discover all our machines, stay connected!



REQUEST A QUOTE

sales@orotig.com

more information on orotig.com

FEATURES



MADE IN ITALY

Leica Microscope

Leica 45° Stereo Microscope with 10x optical zoom and aiming crosshair.

Intuitive Interface

Dynamic work program selection based on the type of work and material selected.

Height-adjustable Table

Movable table with automatic movement on 3 axes X-Y-Z with load capacity up to 80 kg.



Connectivity and WiFi

Telemetry for remote assistance.

Increased Security

Double safety system with mechanical and electronic shutters for maximum protection.

Encoder

Setting working parameters via encoder in the welding chamber.

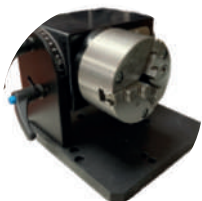
Telescopic Stand

Telescopic support with adjustable armrest and anchor point for joystick for working both seated and standing.

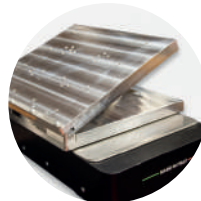
TECHNICAL DATA

	Aries +	Aries ²
CRYSTAL TYPE	Nd:YAG @ 1064	Nd:YAG @ 1064 [x 2]
PULSE POWER	240 J	280 J
PULSE DURATION	25 ms	25 ms
PEAK PULSE POWER	10 kW	12 kW
AVERAGE POWER	120 W	150 W
PULSE FREQUENCY	0 - 40 Hz	0 - 40 Hz
MACHINE ELECTRICAL	230 VAC ± 10%, 1P + N + PE, 50/60 Hz, 2.2 kW (Aries +) / 3.6 kW (Aries ²)	
TABLE ELECTRICAL	230 VAC ± 10%, 1P + N + PE, 50/60 Hz, 1 kW	
FOCAL DIAMETER	0.1 to 2 mm	0.1 to 2 mm
COMMAND ACCESS	External with 7" capacitive touchscreen display. Internal via rotary switch	
COOLING SYSTEM	Forced air with double circuit, 8 L liquid and double radiator	
WEIGHT	250 Kg (+ 55 Kg height-adjustable support)	

ACCESSORIES



ROTARY & SPINDLE (Ø 80mm)



INCLINED PLANE FOR POSITIONER TABLE (UP TO 30°)



ADJUSTABLE MICROSCOPE STAND (5° - 25°)